

Tilt/tip is adjusted with adjustment screws #2 in the drawing.

In order to lock tilt/tip axis, tighten tilt/tip lock screws (#1 in the drawing).

For locking, turn lock screws clockwise, until full stop.

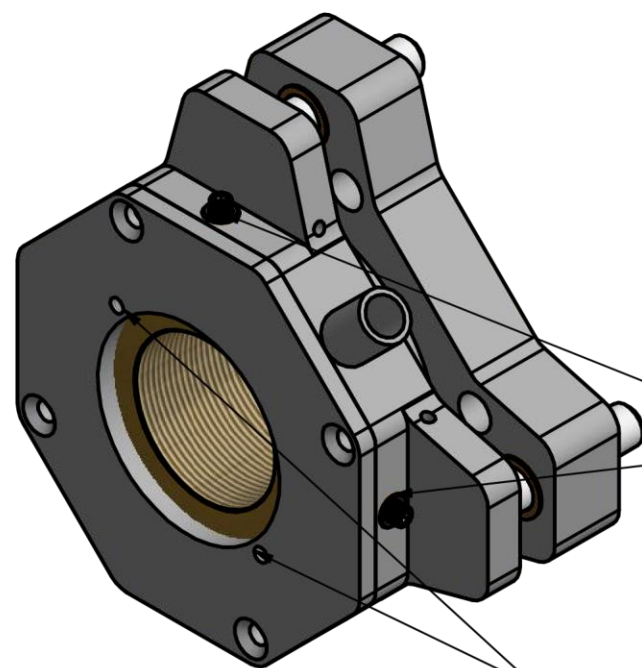
Unlock tilt/tip by releasing lock screws #1 (rotate anticlockwise 2-3 turns max).

X/Y translation is adjusted with adjustment screws #3 in the drawing.

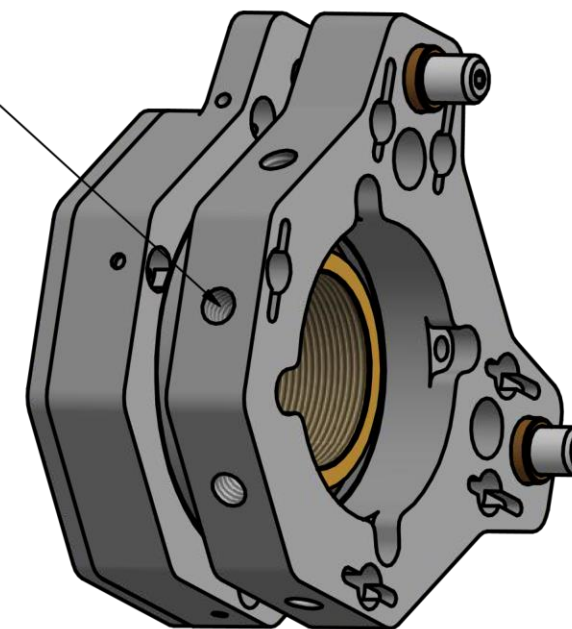
In order to lock X/Y translation axis, tighten X/Y translation lock screws (#4 in the drawing).

For locking, turn lock screws clockwise, until full stop.

Unlock tilt/tip by releasing lock screws #4 (rotate anticlockwise 1/2 turns max).



M6 mounting thread on 5 mounting faces



Two-axis kinematic mount with two screws (thread pitch 250 μm (100TPI)) with position lock.

Adjustment range up to +/- 4 degrees.

Two-axis translation stage with 2mm travel range driven by two screws (thread pitch 200 μm).

Translation stage with position lock.

5 mounting holes (M6) for convenient mount positioning.